



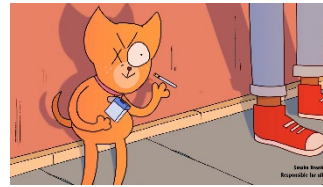
CHLOE LINSCOMB

www.chloelinscomb.com (512) 203-9458 chloelinscomb@gmail.com



Nature's Bounty

Responsible for character design and 2D rig animation for both characters in Toon Boom Harmony. (00:03-00:09)



Smoke Break

Responsible for 2D animation, compositing, and backgrounds in Toon Boom Harmony and Adobe Photoshop. (00:36-00:43)



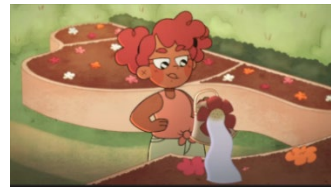
Panic

Responsible for 2D Rig animation for the right character. It was animated with a full body master controller rig in Toon Boom Harmony. (00:9-00:16)



Nature's Bounty

Responsible for rough animation, 2D rig animation, and traditional animation on arms and hands in Toon Boom Harmony. (00:43-00:46)



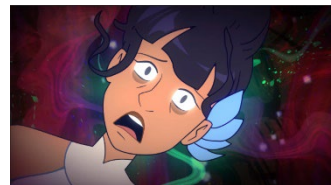
En Garden

Responsible for rough character animation in Toon Boom Harmony. (00:16-00:24)



Panic

Responsible for 2D Rig animation for the right character. It was animated with a full body master controller rig in Toon Boom Harmony. (00:47-00:50)



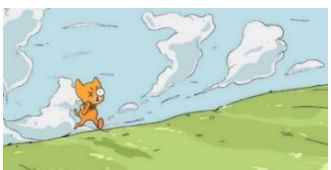
Panic

Responsible for keys and tweens using 2D rig animation in Toon Boom Harmony. (00:24-00:26)



Nature's Bounty

Responsible for 2D rig animation and clean up/color for some traditional parts of the shot in Toon Boom Harmony. (00:50-00:55)



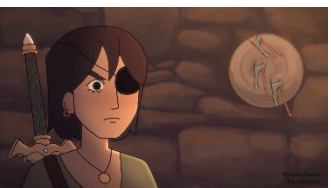
Smoke Break

Responsible for character design, background, traditional animation/cleanup, and compositing in Toon Boom Harmony. (00:26-00:28)



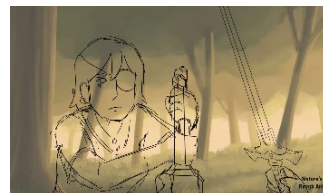
Smoke Break

Responsible for character design, backgrounds, compositing, and traditional animation in both Toon Boom Harmony and Adobe Photoshop. (00:55-00:59)



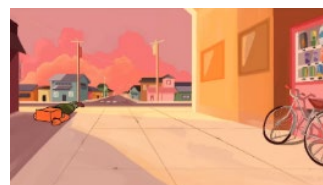
Nature's Bounty

Responsible for 2D rig animation in Toon Boom Harmony. (00:28-00:36)



Nature's Bounty

Responsible for rough animation in Toon Boom Harmony. (00:59-01:05)



Stop Thief!

Responsible for character design, background, traditional animation, and compositing using Adobe Photoshop and Toon Boom Harmony. (01:05-01:11)